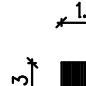
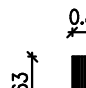








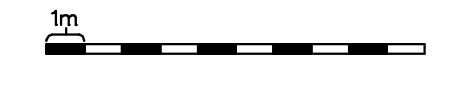
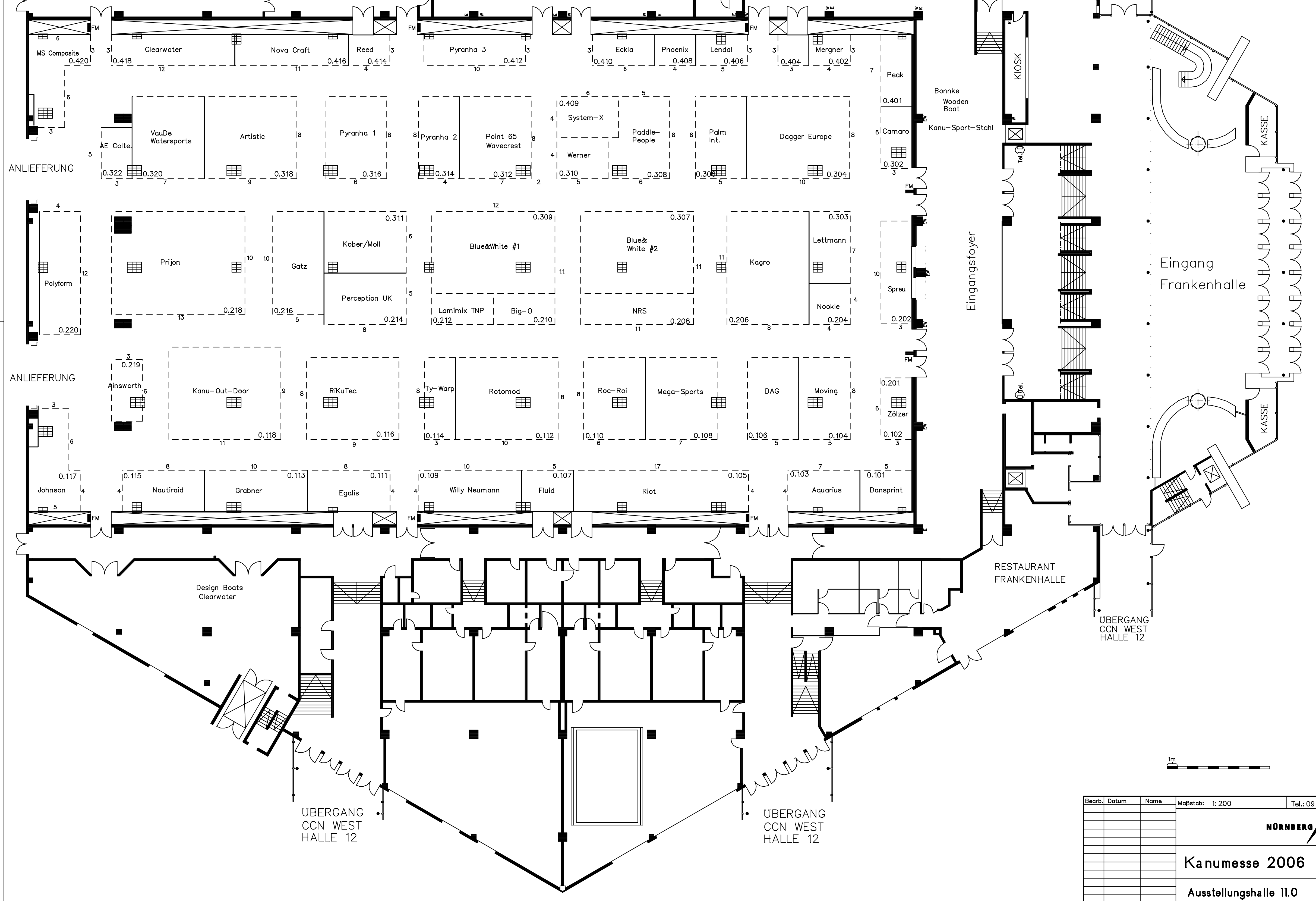
ÜBERGANG
RESTAURANT MITTE
HALLEN 9,10

PASSAGE
11.0/10.0

Bemerkungen:

-  161
Hallensäule
-  85
Hallensäule
-  Hallensäule 85x85 cm
-  W=Wasseranschluß in Säule
-  E=Elektroanschluß in Säule
-  Lüftungsschacht 81x81 cm
-  FM Feuerlöschkasten 78x30x175cm
-  Versorgungsschacht
Wasser-Elektro-Telekom

Foyer 1



Bearb.	Datum	Name	Maßstab:	Tel.:
			1:200	0911/8606-0
NÖRNBERG MESSE				
Kanumesse 2006				
Ausstellungshalle 11.0				Blatt
				Bl.
27.07.06	W6/ES			